

* Park "L" is private and for use of the owners of Lake Miramichi Subdivisions. Park "L" is a common park for the use of the adjacent lot owners only, except Lucas Rd. which is dedicated to the public.

SHEET 1 OF 3 SHEETS LAKE MIRAMICHI SUBDIVISION NO. 2

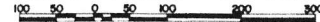
A PART OF SECTION 32 & 33
TOWNSHIP 17 NORTH - RANGE 8 WEST

EVART TOWNSHIP - OSCEOLA COUNTY - MICHIGAN

LAKE MIRAMICHI SUBDIVISION NO. 2
Metes and Bounds Description

DEDICATION:

SCALE : 1 INCH = 100 FEET



ALL DIMENSIONS ARE GIVEN IN FEET AND DECIMALS THEREOF
ALL LOT CORNERS ARE MARKED WITH AN IRON PIPE UNLESS OTHERWISE NOTED

KNOW ALL MEN BY THESE PRESENTS: That LAKE MIRAMICHI, INC., a Michigan Corporation, by Walter A. Utley, President, and Malcolm Briggs, Assistant Secretary, as proprietors, have caused the land embraced in the annexed plat to be surveyed, laid out, and platted to be known as LAKE MIRAMICHI SUBDIVISION NO. 2, being a part of Sections 32 and 33 - Township 17 North - Range 8 West, Evart Township, Osceola County, Michigan, and that the streets and alleys as shown on said plat are hereby dedicated to the use of the ~~public~~ property owners only. *

Signed and Sealed in the Presence of:

LAKE MIRAMICHI, INC.

James R. Howell
James R. Howell

By: Walter A. Utley
Walter A. Utley, President

Gerald W. Lowrey
Gerald W. Lowrey

By: Malcolm Briggs
Malcolm Briggs, Asst. Secretary

STATE OF MICHIGAN) ss,
County of Osceola)

On this 9th day of NOVEMBER, 1966 A.D., before me, HARRY N. ADAMS, a Notary Public, in and for said county, appeared WALTER A. UTLEY and MALCOLM BRIGGS, to me personally known, who being each by me duly sworn, do say that they are the President and Assistant Secretary, respectively, of Lake Miramichi, Inc., a Michigan corporation, and that the seal affixed to said instrument is the corporate seal of said corporation and that said instrument was signed and sealed on behalf of said corporation by authority of its Board of Directors and the said Walter A. Utley acknowledged said instrument to be the free act and deed of said corporation, * and Malcolm Briggs

My Commission expires:

January 7th 1967
Notary Public
HARRY N. ADAMS
OSCEOLA County

CERTIFICATE OF APPROVAL BY BOARD OF COUNTY ROAD COMMISSIONERS:

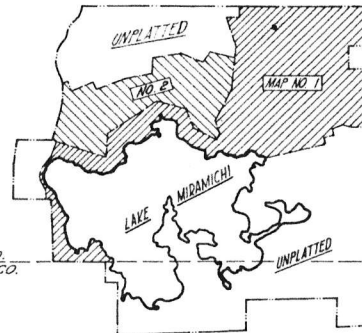
This plat has been examined and was approved on the 9th day of NOVEMBER, 1966, by the Osceola County Board of Road Commissioners.

Fred Neuman Chairman
John R. Leach Member
Fred Neuman Member

SURVEYOR'S CERTIFICATE:

I hereby certify that the plat hereon delineated is correct one and that permanent metal monuments consisting of iron rods at least one-half inch in diameter and thirty-six inches in length encased in concrete cylinder at least four inches in diameter and thirty-six inches in length have been placed at all points marked thus "O" as thereon shown at all angles in the boundary of the plat, at the intersection of lines of streets, and at the intersection of the lines of streets with the boundaries of the plat as shown as said plat.

Prepared & Drafted By: John J. Sweeney
Registered Land Surveyor
Michigan Registration No. 15346
John J. Sweeney



OSCEOLA CO.
MEGOSTA CO.

- ① N81°01'31"E
143.74'
- ② N71°01'21"E
- ③ N82°32'40"W
- ④ 144.18'
- ⑤ A=25°17'04"
Ch=114.06'
Ch=113.34'
S32°30'37"W
- ⑥ S51°37'51"W
132.47'
- ⑦ A=33°10'23"
Ch=22.12'
Ch=22.0'
S31°31'04"W
- ⑧ S14°55'53"W
151.22'
- ⑨ 40.41'
- ⑩ N81°11'54"

CERTIFICATE OF APPROVAL BY COUNTY BOARD:

This plat was approved on the 10th day of Nov, 1966, by the Osceola County Plat Board.

Olav Edstrom Register of Deeds
Carroll Edstrom County Clerk
Alvina Gray County Treasurer
Alvina Gray County Drain Commissioner

COUNTY TREASURER'S CERTIFICATE RELATING TO TAXES:
(Sec. 135, Act 206, 1893, as amended--Sec. 211, 135, C.L. 1948.)
Office of County Treasurer, Osceola County.

I hereby certify, That there are 226 tax liens or titles, held by the State on the lands described hereon, and that there are 226 tax liens or titles held by individuals on said lands, for the five years preceding the 10th day of November, 1966, and that the taxes for said period of five years are all paid, as shown by the records of this office.

This certificate does not apply to taxes, if any, now in process of collection by township, city or village collecting officers.

Alvina Gray
County Treasurer

Being a part of Sections 32 and 33, Township 17 North, Range 8 West, Evart Township, Osceola County, Michigan; said parcel being more particularly described as follows:

Beginning at a point in the section line dividing Sections 32 and 33, a distance of 1804.23 feet; S01°10'52"E from the section corner for Sections 32, 33, 28 and 29, Township 17 North, Range 8 West, Evart Township, Osceola County, Michigan; thence from said beginning point with the following courses:

S81°09'29"E - 11.44 feet to a point of curvature; thence along a curve to the left whose central angle is 76°05'27"; R = 30.0 feet, Arc = 39.84 feet, and Chord = 36.98 feet (N60°47'47"E) to a point; N22°45'04"E - 70.83 feet, thence on a curve to the right whose central angle is 54°29'27"; R = 144.60 feet, Arc = 137.52 feet, and Chord = 132.39 feet (N49°59'47"E) to a point; N49°59'47"E - 74.62 feet, thence on a curve to the right whose central angle is 33°03'02"; R = 324.90', Arc = 187.41, and Chord = 184.83 feet (S83°14'21"W) to a point; thence on a curve to the left whose central angle is 39°13'50"; R = 204.12, Arc = 140.94 feet, and Chord = 138.16 feet (S86°29'45"E) to a point; N73°43'20"E - 92.36 feet; thence on a curve to the right whose central angle is 12°03'36"; R = 179.18 feet, Arc = 37.72 feet, and Chord = 37.65 feet (N79°45'08"E) to a point; thence on a curve to the left whose central angle is 69°11'42"; R = 30.0 feet, Arc = 36.23 feet, and Chord = 34.07 feet (N59°11'05"E) to a point; N16°35'14"E - 213.39 feet; thence on a curve to the left whose central angle is 22°00'01"; R = 275.20 feet, Arc = 106.15 feet, and Chord = 105.50 feet (N05°32'13"E) to a point; S32°30'37"W - 501.26 feet; N71°48'53"E - 128.71 feet; thence on a curve to the right whose central angle is 06°47'22"; R = 420.12 feet, Arc = 49.78 feet, and Chord = 49.76 feet (S38°23'24"E) to a point; S32°59'43"E - 38.57 feet; thence on a curve to the right whose central angle is 35°48'22"; R = 294.08 feet, Arc = 173.51 feet, and Chord = 171.01 feet (S49°53'54"E) to a point; S66°48'05"E - 275.91 feet; thence on a curve to the left whose central angle is 57°04'10"; R = 30.0 feet, Arc = 29.88 feet, and Chord = 28.66 feet (N84°39'50"E) to a point; S29°47'45"E - 128.42 feet; thence on a curve to the right whose central angle is 12°48'22"; R = 258.56 feet, Arc = 217.51 feet, and Chord = 211.15 feet (N80°13'42"E) to a point; S75°40'21"E - 270.93 feet; thence on a curve to the left whose central angle is 96°38'04"; R = 30.0 feet, Arc = 50.60 feet, and Chord = 44.81 feet (N56°00'37"E) to a point; S29°47'45"E - 129.75 feet; thence on a curve to the right whose central angle is 08°36'51"; R = 1761.05 feet, Arc = 264.77 feet, and Chord = 264.52 feet (S16°14'56"W) to a point; S11°56'30"W - 214.62 feet; thence on a curve to the right whose central angle is 26°15'07"; R = 393.56 feet, Arc = 180.44 feet, and Chord = 178.86 feet (S25°04'34"W) to a point; S38°12'37"W - 159.62 feet; thence on a curve to the right whose central angle is 120°47'23"; R = 30.0 feet, Arc = 61.25 feet, and Chord = 52.21 feet (N81°18'41"W) to a point; S69°10'00"W - 70.0 feet; S20°50'00"E - 248.41 feet; thence on a curve to the right whose central angle is 52°12'37"; R = 97.65 feet, Arc = 88.98 feet, and Chord = 85.94 feet (S05°16'19"W) to a point; S31°22'37"W - 63.12 feet; S46°51'28"W - 63.56 feet; thence on a curve to the right whose central angle is 74°35'44"; R = 96.28 feet, Arc = 125.35 feet, and Chord = 116.68 feet (S84°09'20"W) to a point; S40°40'40"W - 308.12 feet; thence on a curve to the right whose central angle is 55°42'18"; R = 154.25 feet, Arc = 149.97 feet, and Chord = 143.33 feet (N30°41'38"W) to a point; N02°50'29"W - 114.61 feet; thence on a curve to the left whose central angle is 60°52'25"; R = 205.20 feet, Arc = 218.01 feet, and Chord = 207.90 feet (N33°16'42"W) to a point; N63°42'54"W - 348.74 feet; thence on a curve to the left whose central angle is 36°04'47"; R = 342.06 feet, Arc = 215.39 feet, and Chord = 211.85 feet (N81°45'18"W) to a point; S80°12'18"W - 75.03 feet; thence on a curve to the left whose central angle is 27°54'52"; R = 584.26 feet, Arc = 284.65 feet, and Chord = 281.87 feet (S66°18'52"W) to a point; S52°17'26"W - 292.72 feet; thence on a curve to the right whose central angle is 16°43'50"; R = 619.76 feet, Arc = 180.97 feet, and Chord = 180.33 feet (S60°39'22"W) to a point; thence on a curve to the left whose central angle is 47°31'11"; R = 276.72 feet, Arc = 229.50 feet, and Chord = 222.99 feet (S45°15'41"W) to a point; thence on a curve to the right whose central angle is 11°00'00"; R = 293.26 feet, Arc = 125.22 feet, and Chord = 125.22 feet (S52°17'26"W) to a point; S52°17'26"W - 292.72 feet; thence on a curve to the left whose central angle is 96°26'01"; R = 54.33 feet, Arc = 91.44 feet, and Chord = 81.04 feet (S63°09'24"W) to a point; N68°37'06"W - 759.29 feet; S45°26'07"W - 26.01 feet; N57°45'55"W - 296.53 feet; N15°42'03"E - 675.22 feet; N01°39'26"E - 403.02 feet; N78°25'37"E - 103.44 feet; S19°34'23"E - 263.34 feet; thence on a curve to the left whose central angle is 107°35'19"; R = 30.0 feet, Arc = 56.33 feet, and Chord = 56.33 feet (S55°22'02"E) to a point; N60°50'19"E - 171.54 feet; thence on a curve to the right whose central angle is 100°29'40"; R = 118.18 feet, Arc = 207.28 feet, and Chord = 181.71 feet (S68°54'51"E) to a point; S18°40'01"E - 34.33 feet; thence on a curve to the left whose central angle is 104°04'06"; R = 43.03 feet, Arc = 78.16 feet, and Chord = 67.58 feet (S70°42'04"E) to a point; N57°15'53"E - 99.58 feet; thence on a curve to the right whose central angle is 41°34'37"; R = 298.41 feet, Arc = 218.54 feet, and Chord = 211.82 feet (N78°03'12"E) to a point; and S81°09'29"E - 110.95 feet to the point of beginning.

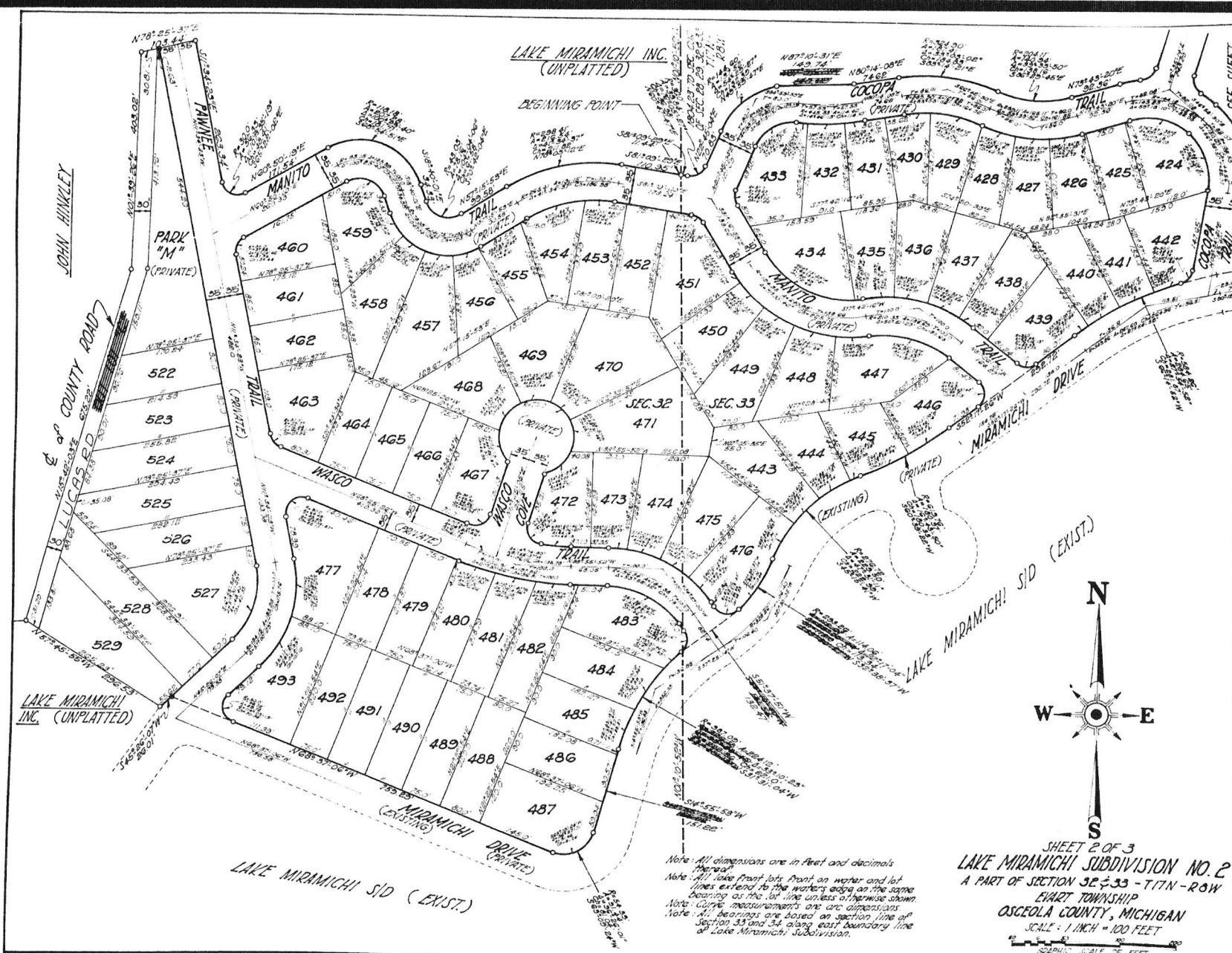
Contains 151 lots, numbered 379 thru 529, inclusive, parks, numbered "L" and "M"; and streets, numbered "A" through "Z".

CERTIFICATE OF MUNICIPAL APPROVAL:

This plat was approved by the Township Board of the Township of Evart, at a meeting held November 9th 1966, and complies with (Date)
Sec. 19A and the width of lots is in compliance with requirements of Section 30, Act 172, of 1929, as amended.

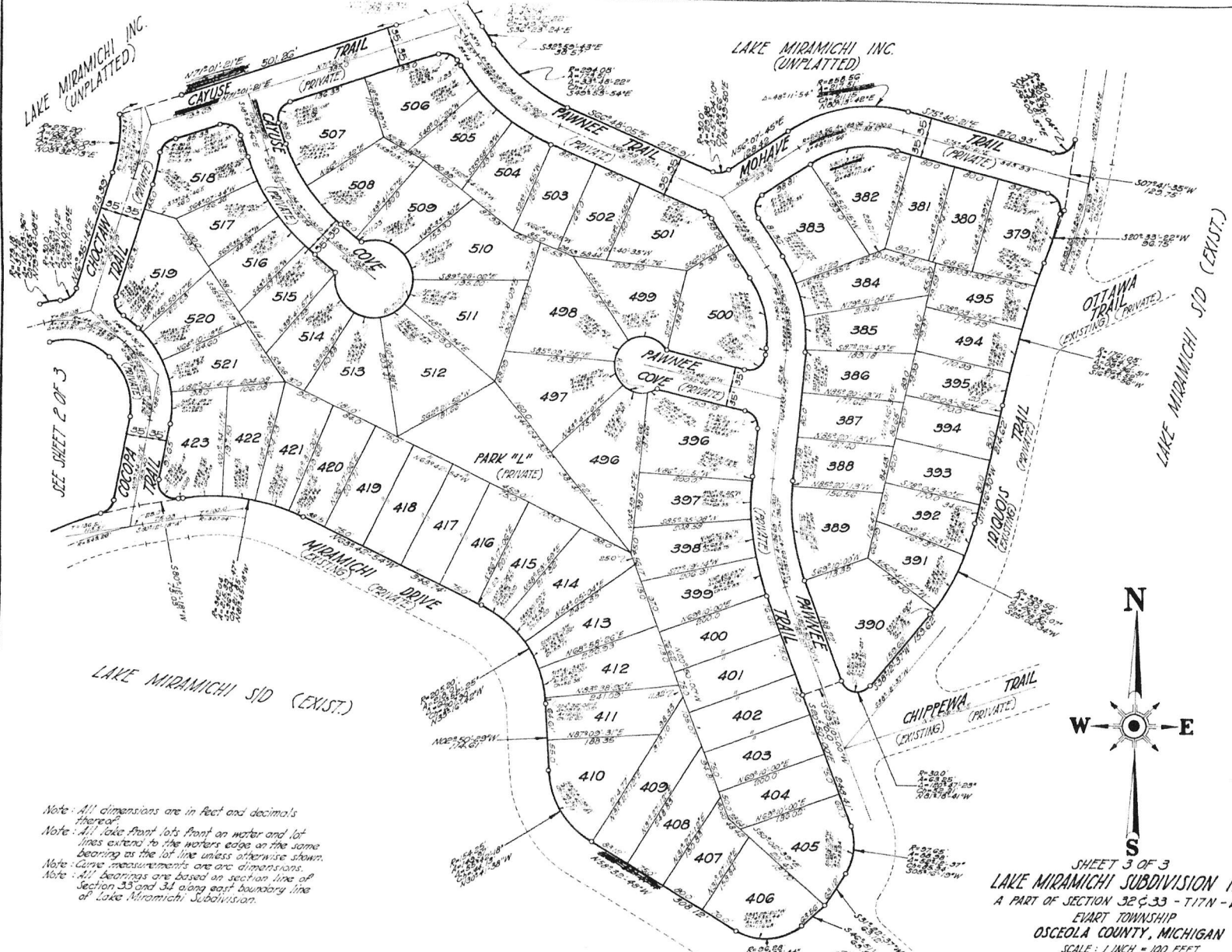
Paul Alexander
Paul Alexander Clerk

18938

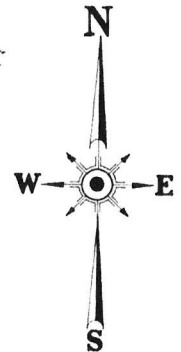


Note: All dimensions are in feet and decimals
 "Areas"
 Note: All lot front lots front on water and lot
 lines extend to the water edge as the same
 bearing as the lot line unless otherwise shown.
 Note: Curve measurements are arc distances.
 Note: All bearings are based on section line of
 Section 33 and 34 along east boundary line
 of Lake Miramichi Subdivision.

SHEET 2 OF 3
LAKE MIRAMICHI SUBDIVISION NO. 2
 A PART OF SECTION 32 & 33 - T17N - R10W
 EARLY TOWNSHIP
 OSCEOLA COUNTY, MICHIGAN
 SCALE: 1 INCH = 100 FEET
 GRAPHIC SCALE OF FEET



Note: All dimensions are in feet and decimals thereof.
 Note: All lake front lots front on water and lot lines extend to the water's edge on the same bearing as the lot line unless otherwise shown.
 Note: Curve measurements are arc dimensions.
 Note: All bearings are based on section line of Section 33 and 34 along east boundary line of Lake Miramichi Subdivision.



SHEET 3 OF 3
LAKE MIRAMICHI SUBDIVISION NO. 2
 A PART OF SECTION 32 & 33 - T17N - R8W
 EVART TOWNSHIP
 OSCEOLA COUNTY, MICHIGAN
 SCALE: 1 INCH = 100 FEET
 GRAPHIC SCALE OF FEET