

### Standard Aquatic Vegetation Summary Sheet

Code No	Plant Name	Total number of AVAS's for each Density Category				Calculations				Sum of Columns 5-8	Total No. of AVAS	Col 9 divided by Col 10
		A	B	C	D	A x 1	B x 10	C x 40	D x 80	9	10	11
1	Eurasian watermilfoil	12	8	0	0	12	80	0	0	92	73	1.26
2	Curly leaf pondweed	0	0	0	0	0	0	0	0			
3	Chara	1	3	33	33	1	30	1320	2640	3991	73	54.67
4	Thinleaf pondweed	2	17	0	0	2	170	0	0	172	73	2.36
5	Flatstem pondweed	4	24	0	0	4	240	0	0	244	73	3.34
6	Robbins pondweed	0	0	0	0	0	0	0	0			
7	Variable pondweed	1	4	0	0	1	40	0	0	41	73	0.56
8	White stem pondweed	0	0	0	0	0	0	0	0			
9	Richardsons pondweed	2	2	0	0	2	20	0	0	22	73	0.30
10	Illinois pondweed	0	0	0	0	0	0	0	0			
11	Large leaf pondweed	6	30	1	0	6	300	40	0	346	73	4.74
12	American pondweed	0	1	0	0	0	10	0	0	10	73	0.14
13	Floating leaf pondweed	0	0	0	0	0	0	0	0			
14	Water stargrass	0	0	0	0	0	0	0	0			
15	Wild celery	1	5	30	29	1	50	1200	2320	3571	73	48.92
16	Sagittaria (submersed)	0	0	0	0	0	0	0	0			
17	Northern watermilfoil	0	0	0	0	0	0	0	0			
18	Rush	0	0	0	0	0	0	0	0			
19	Variable leaf watermilfoil	0	0	0	0	0	0	0	0			
20	Coontail	5	59	6	0	5	590	240	0	835	73	11.44
21	Elodea	0	0	0	0	0	0	0	0			
22	Bladderwort	0	1	0	0	0	10	0	0	10	73	0.14
23	Mini Bladderwort	0	0	0	0	0	0	0	0			
24	Buttercup	0	0	0	0	0	0	0	0			
25	Naiad	7	33	2	1	7	330	80	80	497	73	6.81
26	Brittle naiad	0	0	0	0	0	0	0	0			
27	Sago Pondweed	0	0	0	0	0	0	0	0			
28	Cabomba	0	0	0	0	0	0	0	0			
29	Starry Stonewort	0	0	0	0	0	0	0	0			
30	Water Lily	12	13	1	0	12	130	40	0	182	73	2.49
31	Spatterdock	0	0	0	0	0	0	0	0			
32	Water shield	11	1	0	0	11	10	0	0	21	73	0.29
33	Common Duckweed	4	2	0	0	4	20	0	0	24	73	0.33
34	Greater duckweed	0	0	0	0	0	0	0	0			
35	Watermeal	0	0	0	0	0	0	0	0			
36	Arrowhead	0	0	0	0	0	0	0	0			
37	Pickereelweed	0	0	0	0	0	0	0	0			
38	Arrow arum	0	0	0	0	0	0	0	0			
39	Cattail	32	15	8	0	32	150	320	0	502	73	6.88
40	Buirush	21	19	12	2	21	190	480	160	851	73	11.66
41	Iris	0	0	0	0	0	0	0	0			
42	Swamp loosestrife	15	8	0	0	15	80	0	0	95	73	1.30
43	Purple loosestrife	3	1	0	0	3	10	0	0	13	73	0.18
44	Phragmites	0	0	0	0	0	0	0	0			
45	Frogbit	0	0	0	0	0	0	0	0			
46	Slender spikerush	0	0	0	0	0	0	0	0			
47	Smartweed	0	0	0	0	0	0	0	0			
48	Water marigold	0	0	0	0	0	0	0	0			
49	American lotus	0	0	0	0	0	0	0	0			
50		0	0	0	0		0	0	0			

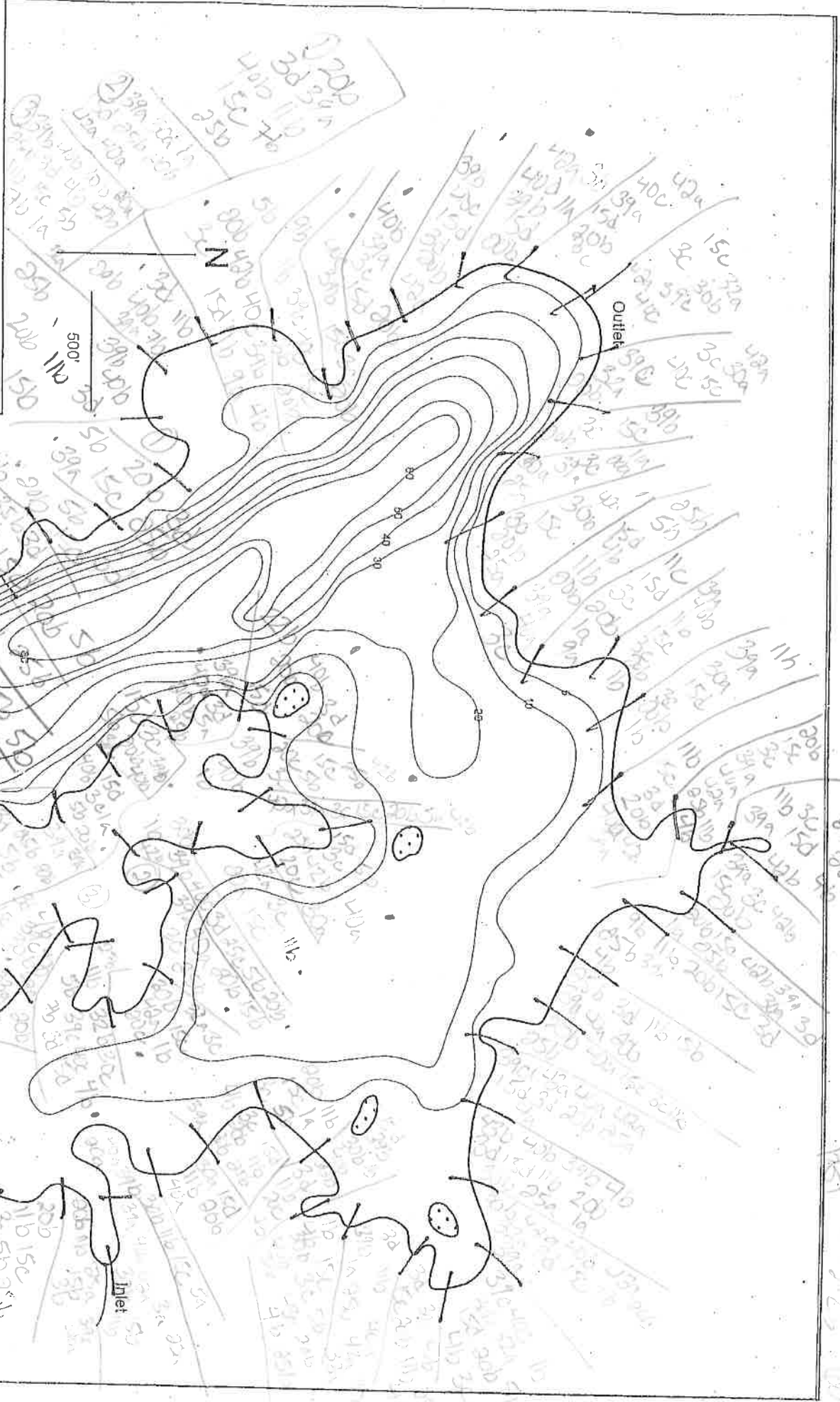
**Total cumulative cover**

**157.79**

**LAKE MIRAMICHI**  
185.9 Surface Acres

Osceola County  
Ewart County  
T-17N R8W Sec 33, 32

Professional Lake Management, P.O. Box 132, Caledonia, MI 49316 Phone (800) 382-4434



0-12-25-1997