

COPY
SHEET 1 OF 2 SHEETS
LAKE MIRAMICHI SUBDIVISION NO. 3

A PART OF SECTION 33
TOWNSHIP 17 NORTH - RANGE 8 WEST
EVART TOWNSHIP - OSCEOLA COUNTY - MICHIGAN

SCALE : 1 INCH = 100 FEET
100 50 0 50 100 200 300

ALL DIMENSIONS ARE GIVEN IN FEET AND DECIMALS THEREOF
O DENOTES CONCRETE MONUMENT
ALL LOT CORNERS ARE MARKED WITH AN IRON PIPE UNLESS OTHERWISE NOTED

DEDICATION:

KNOW ALL MEN BY THESE PRESENTS: That LAKE MIRAMICHI, INC., a Michigan Corporation, by Walter A. Utley, President, and Malcolm Briggs, Assistant Secretary, as proprietors, have caused the land embraced in the annexed plat to be surveyed, laid out, and platted to be known as LAKE MIRAMICHI SUBDIVISION NO. 3, being a part of Section 33 - Township 17 North - Range 8 West, Evart Township, Osceola County, Michigan, and that the streets as shown on said plat are hereby dedicated to the use of the lot owner, or to future owners where title is traceable to this proprietor. Alleyways shown on said plat are private easements for the use of abutting property owners only for the purpose of ingress and egress. The parks are private and dedicated to the use of the lot owners.

LAKE MIRAMICHI, INC.
P.O. Box 700
Evart, Michigan

Signed and sealed in the presence of:

Gerald W. Lowrey
Gerald W. Lowrey

By *Walter A. Utley*
Walter A. Utley, President

Henry True
HENRY TRUE

By *Malcolm Briggs*
Malcolm Briggs, Assistant Secretary

STATE OF MICHIGAN)
County of Osceola) ss.

On this 14th day of July, 1927, A.D., before me, HARRY A. ADAMS, a Notary Public, in and for said county, appeared WALTER A. UTLEY and MALCOLM BRIGGS, to me personally known, who being each by me duly sworn, did say that they are the President and Assistant Secretary, respectively, of Lake Miramichi, Inc., a Michigan corporation, and that the seal affixed to said instrument is the corporate seal of said corporation and that said instrument was signed and sealed on behalf of said corporation by authority of its Board of Directors and the said Walter A. Utley acknowledged said instrument to be the free act and deed of said corporation.

My Commission expires:

JAN 9, 1927

Harry A. Adams
Notary Public
County of OSCEOLA

CERTIFICATE OF APPROVAL BY BOARD OF COUNTY ROAD COMMISSIONERS:

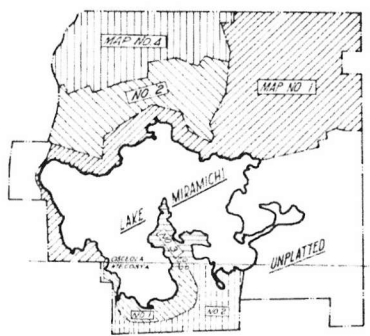
This plat has been examined and was approved on the 26th day of July, 1927, by the Osceola County Board of Road Commissioners:

John Leach
John Leach, Chairman
Fred Neuman
Fred Neuman, Member
F. G. Lindell
F. G. Lindell, Member

SURVEYOR'S CERTIFICATE:

I hereby certify that the plat herein delineated is correct and that permanent metal monuments, consisting of iron rods or pipes, half inch in diameter and thirty-six inches in length, are placed in two rows, cylinder at least four inches in diameter and thirty-six inches in length, have been placed at all points marked thus "O" on the same shown at all angles in the boundary of the plat, at the intersection of lines of streets, and at the intersection of the lines of streets with the boundaries of the plat as shown as said plat.

John Zarowicz
John Zarowicz
Michigan Registration No. 15246



CERTIFICATE OF APPROVAL BY COUNTY BOARD:

This plat was approved on the 27th day of July, 1927, by the Osceola County Board,

Evelyn C. Edstrom
Evelyn C. Edstrom, Register of Deeds
Carl A. Wignar
Carl A. Wignar, County Clerk
Walter Johnston
Walter Johnston, County Treasurer
Walter Johnston
Walter Johnston, County Drain Commissioner

COUNTY TREASURER'S CERTIFICATE RELATING TO TAXES:
(Sec. 135, Act 206, 1893, as amended - Sec. 211, 135, C.L. 1948.)
Office of County Treasurer, Osceola County.

I hereby certify that there are no tax liens or titles, held by the State on the lands described herein, and that there are no tax liens or titles held by individuals on said lands, for the three years preceding the 27th day of July, 1927, and that the taxes for said period of five years are paid, as shown by the records of this office.

This certificate does not apply to taxes, if any, now in process of collection by township, city or village collecting officers.

Walter Johnston
Walter Johnston, County Treasurer

COPY

Recorded this 27th day of July, 1927, at Evart, Michigan.
A. D. 1927, of the 14th day of July.
Walter Johnston
Walter Johnston, County Treasurer

**LAKE MIRAMICHI SUBDIVISION NO. 3
Metes and Bounds Description**

Being a part of Section 33, Township 17 North, Range 8 West, Evart Township, Osceola County, Michigan; said parcel described as follows:

Beginning at a point on the south line of Section 33, S89°30'-32"E a distance of 1219.56 feet from the common corner of Sections 32 and 33, Township 17 North, Range 8 West, Evart Township, Osceola County, Michigan, and Sections 4 and 5, Township 16 North, Range 8 West, Chippewa Township, Mecosta County, Michigan. Said point of beginning being on the county line between Osceola and Mecosta Counties, and on the north line of Lake Miramichi Subdivision No. 2, Mecosta County, Michigan; thence from said beginning point with the following courses:

N24°-35'-23"W - 59.08 feet; N45°-17'-25"W - 64.62 feet; N69°-57'-15"W - 60.08 feet; N11°-22'-43"W - 106.51 feet; N28°-41'-13"W - 47.04 feet; N66°-09'-56"W - 48.14 feet; N79°-41'-30"W - 87.10 feet; N69°-10'-50"W - 73.04 feet; N00°-18'-13"W - 43.16 feet; N55°-22'-24"W - 50.74 feet; S85°-40'-10"W - 66.19 feet; N13°-20'-15"E - 177.25 feet; thence on a curve to the right whose central angle is 60°00'-00", R = 70.00 feet, Arc = 73.30 feet, and Chord = 70.00 feet (N53°-20'-49"W) to a point; N50°-58'-26"W - 67.88 feet; N74°-40'-43"W - 75.69 feet; N29°-21'-28"W - 91.79 feet; N56°-54'-55"E - 78.77 feet; N14°-21'-55"E - 72.67 feet; N30°-19'-25"W - 182.00 feet; S57°-13'-36"W - 65.58 feet; S78°-41'-24"W - 61.19 feet; N26°-04'-31"W - 52.33 feet; N34°-44'-06"E - 91.26 feet; N85°-41'-44"E - 93.26 feet; S13°-37'-20"E - 59.39 feet; S30°-19'-25"E - 117.00 feet; S78°-55'-40"E - 111.00 feet; N77°-35'-33"E - 102.39 feet; S56°-18'-36"E - 39.66 feet; S33°-39'-19"W - 45.00 feet; S28°-00'-41"W - 74.00 feet; S04°-13'-48"E - 127.55 feet; thence on a curve to the right whose central angle is 57°-58'-01", R = 70.00 feet, Arc = 70.82 feet, and Chord = 67.84 feet (S46°-37'-00"E) to a point; thence on a curve to the left whose central angle is 49°-27'-30", R = 30.00 feet, Arc = 25.90 feet, and Chord = 25.10 feet (S42°-21'-45"E) to a point; S67°-05'-30"E - 34.63 feet; N22°-54'-30"E - 176.72 feet; N00°-44'-08"W - 109.16 feet; N23°-42'-10"E - 140.83 feet; N10°-02'-27"W - 20.25 feet; N45°-43'-31"W - 35.87 feet; N02°-43'-35"W - 42.05 feet; N53°-31'-51"E - 85.80 feet; N06°-24'-16"E - 98.62 feet; N44°-11'-35"E - 50.21 feet; S18°-48'-43"E - 96.14 feet; S18°-09'-14"E - 64.20 feet; S71°-14'-29"E - 55.97 feet; S02°-06'-06"W - 109.07 feet; S58°-57'-28"E - 65.18 feet; S15°-33'-56"W - 91.67 feet; S02°-24'-58"W - 63.00 feet; S13°-28'-30"E - 69.56 feet; S23°-06'-21"E - 78.62 feet; S38°-34'-08"E - 100.00 feet; S40°-27'-44"W - 89.38 feet; S08°-16'-33"W - 55.58 feet; S42°-58'-49"E - 41.41 feet; S67°-05'-30"E - 260.00 feet; N11°-55'-05"W - 76.14 feet; N40°-01'-49"W - 130.60 feet; N53°-07'-42"E - 65.00 feet; N68°-54'-28"E - 75.03 feet; S53°-32'-27"E - 54.18 feet; N82°-31'-35"E - 95.00 feet; N36°-59'-29"E - 38.61 feet; N88°-11'-27"E - 54.76 feet; S78°-09'-04"E - 91.21 feet; S54°-38'-15"E - 152.05 feet; S06°-57'-11"W - 82.61 feet; S29°-13'-58"E - 124.91 feet; N74°-13'-33"W - 183.93 feet; S82°-52'-30"W - 193.49 feet; S48°-59'-08"W - 64.94 feet; thence on a curve to the right whose central angle is 28° 26' 49", R = 230.72 feet, Arc = 114.55 feet, and Chord = 113.39 feet (S26°-47'-28"E) to a point; S13°-00'-36"E - 135.00 feet; S54°-41'-57"E - 83.24 feet; N85°-42'-39"E - 240.67 feet; S21°-00'-36"E - 61.19 feet to a point in the South line of Section 33, Township 17 North, Range 8 West, Evart Township, Osceola County, Michigan, said point being on the county line between Osceola and Mecosta Counties and the northeast corner of Lake Miramichi Subdivision No. 2, Mecosta County, Michigan; thence along the north boundary of said subdivision N89°-30'-32"W - 778.43 feet to the point of beginning.

Containing 27 lots, numbered 760 thru 786, inclusive; and 2 private parks, "Herred" and "Lake Miramichi Park."

CERTIFICATE OF MUNICIPAL APPROVAL:

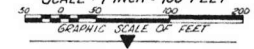
This plat was approved by the Township Board of the Township of Evart, at a meeting held July 27, 1927, and complies with Sec. 19A and the width of lots is in compliance with requirements of Section 99, Act 172, of 1925, as amended.

Betsy White
Betsy White, Clerk

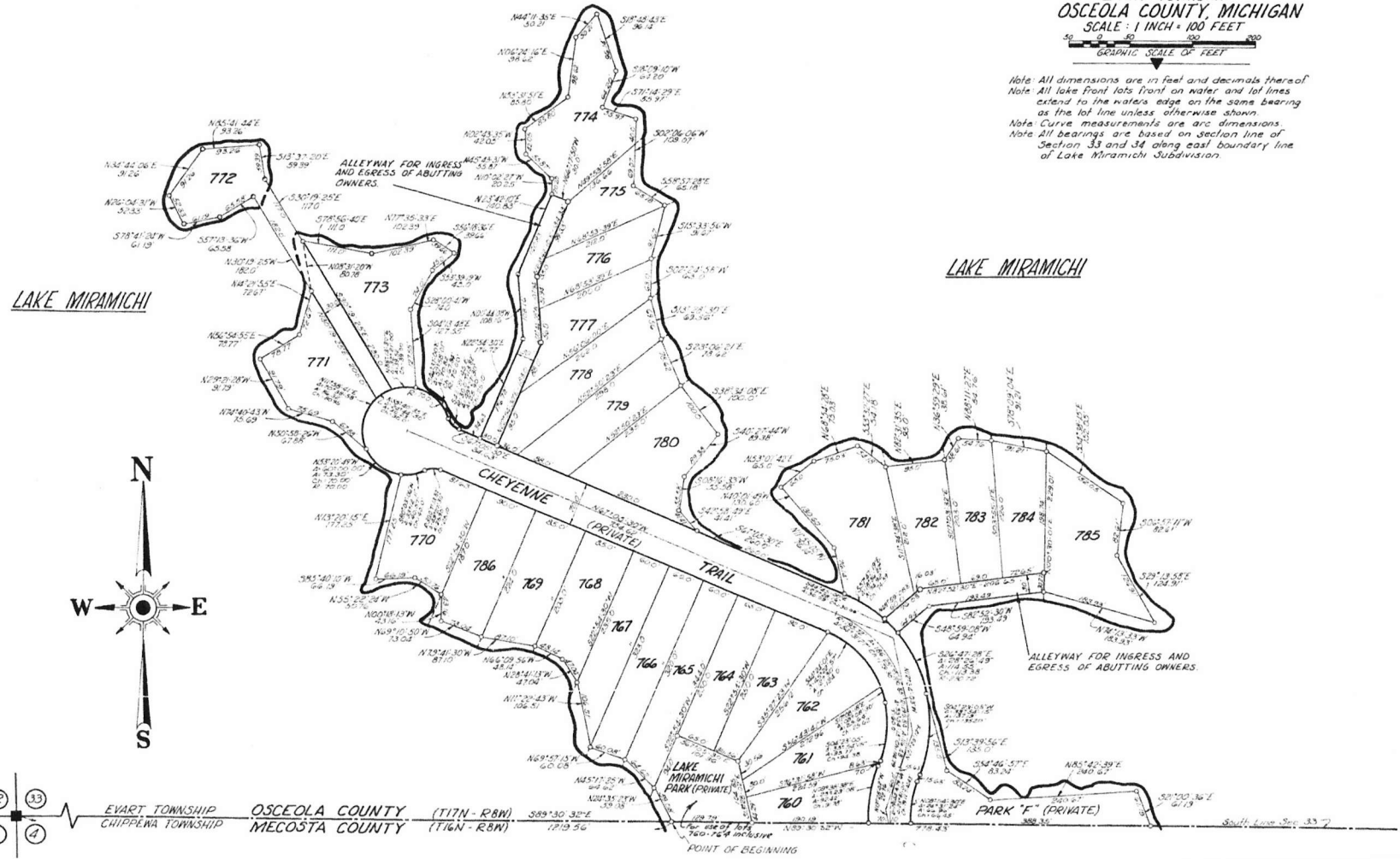
49602

PO. BOX 700
EVART MICH

SHEET 2 OF 2
LAKE MIRAMICHI SUBDIVISION NO. 3
 A PART OF SECTION 33 - T17N - R8W
 EVART TOWNSHIP
 OSCEOLA COUNTY, MICHIGAN
 SCALE: 1 INCH = 100 FEET

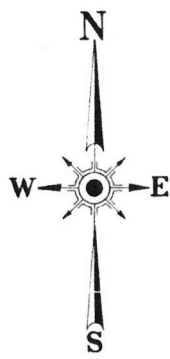


*Note: All dimensions are in feet and decimals thereof.
 Note: All lake front lots front on water and lot lines extend to the waters edge on the same bearing as the lot line unless otherwise shown.
 Note: Curve measurements are arc dimensions.
 Note: All bearings are based on section line of Section 33 and 34 along east boundary line of Lake Miramichi Subdivision.*



LAKE MIRAMICHI

LAKE MIRAMICHI



EVART TOWNSHIP
 CHIPPEWA TOWNSHIP
 OSCEOLA COUNTY (T17N - R8W)
 MECOSTA COUNTY (T16N - R8W)

LAKE MIRAMICHI SUBDIVISION NO. 2
 SEE SHEET 3 OF 3

45000