

COPY
SHEET 1 OF 3 SHEETS

LAKE MIRAMICHI SUBDIVISION NO. 2

A PART OF SECTION 4 & 5
TOWNSHIP 16 NORTH - RANGE 8 WEST
CHIPPEWA TOWNSHIP - MECOSTA COUNTY - MICHIGAN

LAKE MIRAMICHI SUBDIVISION NO. 2
Metes and Bounds Description

SCALE : 1 INCH = 100 FEET

DEDICATION:

KNOW ALL MEN BY THESE PRESENTS: That LAKE MIRAMICHI, INC., a Michigan Corporation, by Walter A. Utley, President, and Malcolm Briggs, Assistant Secretary, as proprietors, have caused the land embraced in the annexed plat to be surveyed, laid out, and platted to be known as LAKE MIRAMICHI SUBDIVISION NO. 2, being a part of Sections 4 and 5 - Township 16 North - Range 8 West, Chippewa Township, Mecosta County, Michigan, and that the streets and alleys as shown on said plat are hereby dedicated to the use of the lot owner, or to future owners where title is traceable to this proprietor and that the parks are private and dedicated to the use of the lot owners.

Signed and Sealed in the Presence of:

LAKE MIRAMICHI, INC.
P.O. Box 700
Ewart, Michigan

By: Walter A. Utley
Walter A. Utley, President

By: Malcolm Briggs
Malcolm Briggs, Asst. Secretary

By: Ronald Lynch
RONALD LYNCH

STATE OF MICHIGAN)
County of Mecosta) ss.

On this 14th day of July, 1967 A.D., before me, HARRY H. ADAMS, a Notary Public, in and for said county appeared WALTER A. UTLEY and MALCOLM BRIGGS, to me personally known, who being each by me duly sworn, did say that they are the President and Assistant Secretary, respectively, of Lake Miramichi, Inc., a Michigan corporation, and that the seal affixed to said instrument is the corporate seal of said corporation and that said instrument was signed and sealed in behalf of said corporation by authority of its Board of Directors and the said Walter A. Utley acknowledged said instrument to be the free act and deed of said corporation.

HARRY H. ADAMS
Notary Public
OSCEOLA County

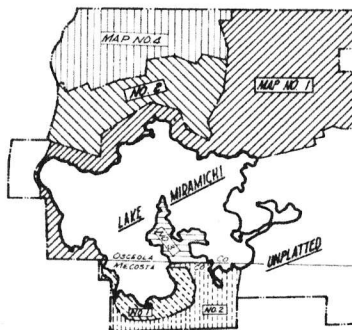
My Commission expires: JAN 9, 1971

CERTIFICATE OF APPROVAL BY BOARD OF COUNTY ROAD COMMISSIONERS:

This plat has been examined and was approved on the 26th day of July, 1967, by the Mecosta County Board of Road Commissioners.

Wm. F. Ryan
Chairman
Downey Hansen
Member
Mar. KS Spedask.
Member

ALL DIMENSIONS ARE GIVEN IN FEET AND DECIMALS THEREOF
OR DENOTES CONCRETE MONUMENT
ALL LOT CORNERS ARE MARKED WITH AN IRON PIPE UNLESS OTHERWISE NOTED



CERTIFICATE OF APPROVAL BY COUNTY BOARD:

This plat was approved on the 4th day of August, 1967, by the Mecosta County Plat Board.

Carl Waldron
Register of Deeds
Norman Mason
County Clerk
Ova Schuberg
County Treasurer
Arnold Lavellette
County Drain Commissioner

CERTIFICATE OF MUNICIPAL APPROVAL:

This plat was approved by the Township Board of the Township of Chippewa, at a meeting held 7/19/67 (Date), and complies with Sec. 19A and the width of lots is in compliance with requirements of Section 30, Act 172, of 1929, as amended.

SURVEYOR'S CERTIFICATE:

I hereby certify that the plat hereon delineated is a correct one and that permanent metal monuments consisting of iron rods at least one-half inch in diameter and thirty-six inches in length encased in concrete cylinder at least four inches in diameter, and thirty-six inches in length have been placed at all points marked thus "O" as thereon shown at all angles in the boundary of the plat, at the intersection of lines of streets, and at the intersection of the lines of streets with the boundaries of the plat as shown on said plat.

Prepared by
P.O. BOX 700
EWART, MICH.

John J. Saramone
Registered Land Surveyor,
Michigan Registration No. 19346

Being a part of Sections 4 and 5, Township 16 North, Range 8 West, Chippewa Township, Mecosta County, Michigan; said parcel being more particularly described as follows:

Beginning at a point in the northwest corner of Lake Miramichi Subdivision No. 1, Mecosta County, Michigan, said point being on the centerline of Miramichi Drive at its intersection with the County line of Osceola and Mecosta Counties, said point being S89°-42'-28"W a distance of 212.50 feet from the common corner of Sections 32 and 33, Township 17 North, Range 8 West, Ewart Township, Osceola County, Michigan, and Sections 4 and 5, Township 16 North, Range 8 West, Chippewa Township, Mecosta County, Michigan; thence from said beginning point along the boundary of Lake Miramichi Subdivision No. 1, Mecosta County, Michigan, with the following courses:

S00°-08'-25"E - 315.54 feet to a point of curvature; thence along a curve to the right whose central angle is 09°-54'-11", R = 1154.25 feet, Arc = 199.50 feet, and Chord = 199.25 feet (S04°-48'-40"W) to a point; S09°-45'-46"W - 161.30 feet; thence on a curve to the left whose central angle is 100°-02'-08", R = 83.86 feet, Arc = 146.41 feet, and Chord = 128.51 feet (S40°-15'-18"E) to a point; N89°-43'-38"E - 105.76 feet; thence on a curve to the right whose central angle is 61°-45'-08", R = 83.62 feet, Arc = 90.13 feet, and Chord = 85.83 feet (S59°-21'-48"E) to a point; S28°-31'-14"E - 121.51 feet; S61°-28'-46"W - 35.00 feet; thence on a curve to the left whose central angle is 24°-15'-10", R = 500.41 feet, Arc = 211.82 feet, and Chord = 210.24 feet (S40°-38'-45"E) to a point; S52°-46'-24"E - 249.61 feet; thence on a curve to the left whose central angle is 52°-27'-54", R = 444.21 feet, Arc = 212.91 feet, and Chord = 210.90 feet (S66°-30'-21"E) to a point; S80°-14'-18"E - 78.27 feet; thence on a curve to the left whose central angle is 21°-52'-32", R = 577.45 feet, Arc = 220.47 feet, and Chord = 219.13 feet (N88°-49'-26"E) to a point; thence on a curve to the left whose central angle is 22°-11'-38", R = 559.52 feet, Arc = 220.61 feet, and Chord = 219.23 feet (N68°-47'-21"E) to a point; thence on a curve to the right whose central angle is 18°-37'-34", R = 580.70 feet, Arc = 188.78 feet, and Chord = 187.95 feet (N65°-00'-19"E) to a point; N74°-19'-06"E - 246.69 feet; thence on a curve to the left whose central angle is 54°-24'-31", R = 229.54 feet, Arc = 217.98 feet, and Chord = 209.88 feet (N47°-06'-50"E) to a point; N19°-54'-35"E - 152.59 feet; N19°-54'-35"E - 114.32 feet; thence on a curve to the left whose central angle is 02°-15'-07", R = 371.49 feet, Arc = 14.60 feet, and Chord = 14.60 feet (N18°-47'-02"E) to a point; thence continuing on a curve to the left whose central angle is 30°-51'-01", R = 371.49 feet, Arc = 200.03 feet, and Chord = 197.62 feet (N02°-13'-58"E) to a point; N13°-11'-33"W - 78.20 feet; N13°-11'-33"W - 169.60 feet; N13°-11'-33"W - 220.46 feet; thence on a curve to the right whose central angle is 00°-29'-06", R = 876.69 feet, Arc = 7.42 feet, and Chord = 7.42 feet (N13°-26'-06"W) to a point in the northeast corner of Lake Miramichi Subdivision No. 1, Mecosta County, Michigan; S76°-31'-58"W - 370.00 feet along the north line of said subdivision to a point; N09°-13'-48"W - 66.45 feet; N24°-35'-23"W - 56.81 feet to a point in the north line of Section 4, Township 16 North, Range 8 West, Chippewa Township, Mecosta County, Michigan, said line being the county line between Osceola and Mecosta Counties; thence S89°-30'-32"E - 778.43 feet along said line to a point; S21°-00'-36"E - 38.11 feet; S16°-59'-25"E - 39.00 feet; N79°-06'-52"E - 26.48 feet; N31°-07'-21"E - 61.91 feet; S15°-39'-59"E - 58.00 feet; S23°-09'-55"W - 187.25 feet; S27°-01'-18"E - 336.76 feet; S72°-09'-35"E - 91.40 feet; N20°-11'-09"E - 72.45 feet; N37°-23'-47"W - 304.64 feet; N48°-14'-57"E - 162.19 feet; S49°-29'-45"E - 200.00 feet; N47°-44'-26"E - 103.94 feet; N 81°-58'-58"E = 71.70 feet; N08°-25'-37"E - 27.30 feet; N41°-00'-33"W - 30.48 feet; N21°-30'-05"E - 35.47 feet; S55°-39'-12"E - 136.54 feet; S10°-53'-08"W - 252.0 feet; S05°-48'-49"E - 73.08 feet; S11°-05'-57"W - 255.86 feet; S01°-10'-05"E - 674.96 feet; S84°-09'-17"W - 756.4 feet; N00°-06'-01"E - 640.91 feet; N33°-10'-16"W - 119.28 feet; S89°-43'-38"W - 216.10 feet; N00°-00'-20"W - 812.85 feet; S89°-47'-21"E - 70.49 feet to the point of beginning.

Containing 60 lots, numbered 40 thru 99, inclusive; and 4 private parks, lettered "C", "E", "F", and "Lake Miramichi Park".

COUNTY TREASURER'S CERTIFICATE RELATING TO TAXES:
(Sec. 135, Act 206, 1893, as amended - Sec. 211, 135, C.L. 1948.)
Office of County Treasurer, Mecosta County

I hereby certify: That there are 220 tax liens or titles, held by the State on the lands described hereon, and that there are tax liens or titles held by individuals on said lands, for the five years preceding the day of July, 1967, and that the taxes for said period of five years are paid, as shown by the records of this office.

This certificate does not apply to taxes, if any, now in process of collection by township, city or village collecting officers.

49592

County Treasurer Ova Schuberg

LAKE MIRAMICHI RD NO 1
SEE SHEET 8 OF 9

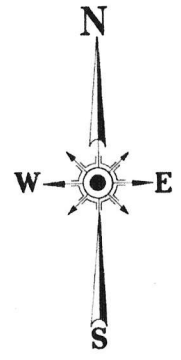
POINT OF BEGINNING
S87°42'28"W
387.42
S87°42'28"W
387.42

EVART TOWNSHIP
CHIPPEWA TOWNSHIP

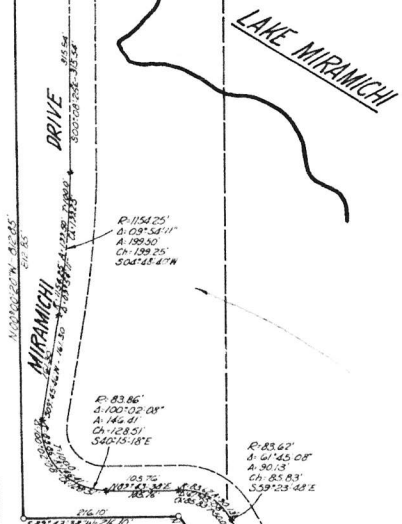
OSCEOLA COUNTY (T17N-R6W) S87°30'32"E
MECOSTA COUNTY (T16N-R6W)

SHEET 2 OF 3
LAKE MIRAMICHI SUBDIVISION NO. 2
A PART OF SECTION 4 & 5 - T16N-R6W
CHIPPEWA TOWNSHIP
MECOSTA COUNTY, MICHIGAN
SCALE - 1 INCH = 100 FEET
GRAPHIC SCALE OF FEET

Note: All dimensions are in feet and decimals thereof.
Note: Curve measurements are arc dimensions.
Note: All bearings are based on section line of Section 33 and 34 along east boundary line of Lake Miramichi Subdivision.

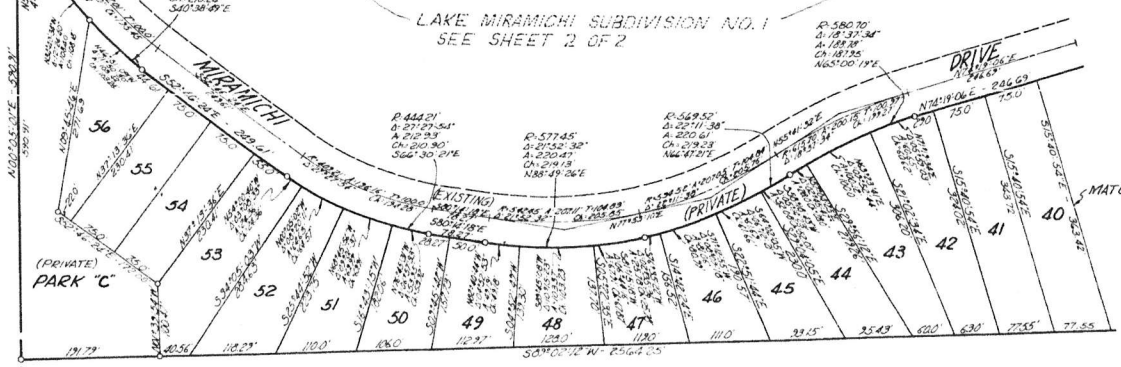


DRIVE
MIRAMICHI DRIVE
WALTER BENGRY



COPY
Meosta County, S.
Lake Miramichi Subdivision No. 2
I recorded this plat
August 23, 1962 at 9
A. M. in Liber 6 of Pl
in File 33, 337, 338.
Carl Williams
Recorder

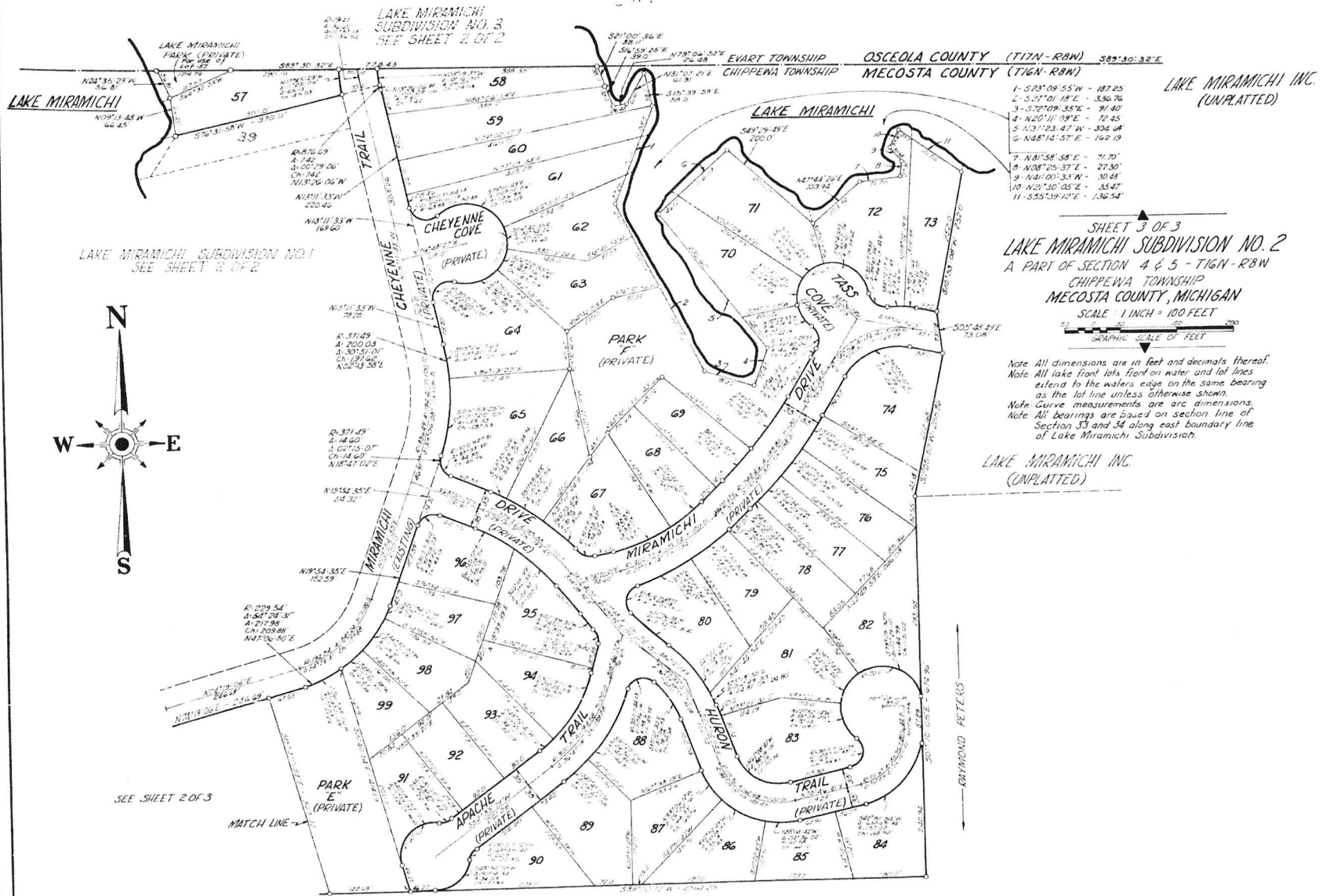
LAKE MIRAMICHI SUBDIVISION NO. 1
SEE SHEET 2 OF 2



SEE SHEET 3 OF 3

HARRY SMITH

11-15-62



LAKE MIRAMICHI SUBDIVISION NO. 3
SEE SHEET 2 OF 2

EWART TOWNSHIP OSCEOLA COUNTY (T12N-R8W) 56°30'32"E
CHIPPWA TOWNSHIP MECOSTA COUNTY (T16N-R8W)

LAKE MIRAMICHI INC.
(UNPLATTED)

- 1- 52°09'55"W - 187.25
- 2- 52°10'18"E - 336.76
- 3- 57°09'35"E - 91.40
- 4- N20°11'08"E - 72.45
- 5- N37°23'47"W - 304.48
- 6- N48°14'57"E - 162.19
- 7- N81°58'58"E - 71.70
- 8- N08°25'37"E - 27.30
- 9- N41°00'33"W - 30.48
- 10- N27°30'05"E - 35.47
- 11- S55°19'12"E - 136.94

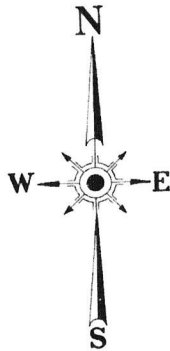
LAKE MIRAMICHI SUBDIVISION NO. 1
SEE SHEET 2 OF 2

SHEET 3 OF 3
LAKE MIRAMICHI SUBDIVISION NO. 2
A PART OF SECTION 4 & 5 - T16N-R8W
CHIPPWA TOWNSHIP
MECOSTA COUNTY, MICHIGAN
SCALE 1 INCH = 100 FEET



Note: All dimensions are in feet and decimals thereof.
Note: All lake front lots front on water and lot lines extend to the waters edge on the same bearing as the lot line unless otherwise shown.
Note: Curve measurements are arc dimensions.
Note: All bearings are based on section line of Section 33 and 34 along east boundary line of Lake Miramichi Subdivision.

LAKE MIRAMICHI INC.
(UNPLATTED)



SEE SHEET 2 OF 3

MATCH LINE

HARRY SMITH