

### Standard Aquatic Vegetation Summary Sheet

| Code No | Plant Name                 | Total number of AVAS's for each Density Category |   |   |   | Calculations |        |        |        | Sum of Columns 5-8 | Total No. of AVAS | Col 9 divided by Col 10 |
|---------|----------------------------|--|---|---|---|--------------|--------|--------|--------|--------------------|-------------------|-------------------------|
|         |                            | A  | B | C | D | A x 1        | B x 10 | C x 40 | D x 80 | 9                  | 10                | 11                      |
| 1       | Eurasian watermilfoil      | 0  | 0 | 0 | 0 | 0            | 0      | 0      | 0      |                    | 20                |                         |
| 2       | Curly leaf pondweed        | 0  | 0 | 0 | 0 | 0            | 0      | 0      | 0      |                    |                   |                         |
| 3       | Chara                      | 2  | 2 | 0 | 0 | 2            | 20     | 0      | 0      | 22                 | 20                | 1.10                    |
| 4       | Thinleaf pondweed          | 0  | 0 | 1 | 0 | 0            | 0      | 40     | 0      | 40                 | 20                | 2.00                    |
| 5       | Flatstem pondweed          | 0  | 0 | 0 | 0 | 0            | 0      | 0      | 0      |                    |                   |                         |
| 6       | Robbins pondweed           | 0  | 0 | 0 | 0 | 0            | 0      | 0      | 0      |                    |                   |                         |
| 7       | Variable pondweed          | 0  | 0 | 0 | 0 | 0            | 0      | 0      | 0      |                    |                   |                         |
| 8       | White stem pondweed        | 0  | 0 | 0 | 0 | 0            | 0      | 0      | 0      |                    |                   |                         |
| 9       | Richardsons pondweed       | 2  | 1 | 0 | 0 | 2            | 10     | 0      | 0      | 12                 | 20                | 0.60                    |
| 10      | Illinois pondweed          | 0  | 0 | 0 | 0 | 0            | 0      | 0      | 0      |                    |                   |                         |
| 11      | Large leaf pondweed        | 0  | 0 | 0 | 0 | 0            | 0      | 0      | 0      |                    |                   |                         |
| 12      | American pondweed          | 0  | 0 | 0 | 0 | 0            | 0      | 0      | 0      |                    |                   |                         |
| 13      | Floating leaf pondweed     | 0  | 0 | 0 | 0 | 0            | 0      | 0      | 0      |                    |                   |                         |
| 14      | Water stargrass            | 0  | 0 | 0 | 0 | 0            | 0      | 0      | 0      |                    |                   |                         |
| 15      | Wild celery                | 0  | 0 | 0 | 0 | 0            | 0      | 0      | 0      |                    |                   |                         |
| 16      | Sagittaria (submersed)     | 0  | 0 | 0 | 0 | 0            | 0      | 0      | 0      |                    |                   |                         |
| 17      | Northern watermilfoil      | 0  | 0 | 0 | 0 | 0            | 0      | 0      | 0      |                    |                   |                         |
| 18      | Rush                       | 0  | 0 | 0 | 0 | 0            | 0      | 0      | 0      |                    |                   |                         |
| 19      | Variable leaf watermilfoil | 0  | 0 | 0 | 0 | 0            | 0      | 0      | 0      |                    |                   |                         |
| 20      | Coontail                   | 0  | 0 | 0 | 0 | 0            | 0      | 0      | 0      |                    |                   |                         |
| 21      | Elodea                     | 0  | 0 | 0 | 0 | 0            | 0      | 0      | 0      |                    |                   |                         |
| 22      | Bladderwort                | 0  | 0 | 0 | 0 | 0            | 0      | 0      | 0      |                    |                   |                         |
| 23      | Mini Bladderwort           | 0  | 0 | 0 | 0 | 0            | 0      | 0      | 0      |                    |                   |                         |
| 24      | Buttercup                  | 0  | 0 | 0 | 0 | 0            | 0      | 0      | 0      |                    |                   |                         |
| 25      | Naiad                      | 3  | 8 | 6 | 3 | 3            | 80     | 240    | 240    | 563                | 20                | 28.15                   |
| 26      | Brittle naiad              | 0  | 0 | 0 | 0 | 0            | 0      | 0      | 0      |                    |                   |                         |
| 27      | Sago Pondweed              | 0  | 0 | 0 | 0 | 0            | 0      | 0      | 0      |                    |                   |                         |
| 28      | Cabomba                    | 0  | 0 | 0 | 0 | 0            | 0      | 0      | 0      |                    |                   |                         |
| 29      | Starry Stonewort           | 0  | 0 | 0 | 0 | 0            | 0      | 0      | 0      |                    |                   |                         |
| 30      | Water Lily                 | 0  | 0 | 0 | 0 | 0            | 0      | 0      | 0      |                    |                   |                         |
| 31      | Spatterdock                | 0  | 0 | 0 | 0 | 0            | 0      | 0      | 0      |                    |                   |                         |
| 32      | Water shield               | 1  | 0 | 0 | 0 | 1            | 0      | 0      | 0      | 1                  | 20                | 0.05                    |
| 33      | Common Duckweed            | 2  | 7 | 3 | 0 | 2            | 70     | 120    | 0      | 192                | 20                | 9.60                    |
| 34      | Greater duckweed           | 0  | 0 | 0 | 0 | 0            | 0      | 0      | 0      |                    |                   |                         |
| 35      | Watermeal                  | 0  | 0 | 0 | 0 | 0            | 0      | 0      | 0      |                    |                   |                         |
| 36      | Arrowhead                  | 0  | 0 | 0 | 0 | 0            | 0      | 0      | 0      |                    |                   |                         |
| 37      | Pickeralweed               | 0  | 0 | 0 | 0 | 0            | 0      | 0      | 0      |                    |                   |                         |
| 38      | Arrow arum                 | 0  | 0 | 0 | 0 | 0            | 0      | 0      | 0      |                    |                   |                         |
| 39      | Cattail                    | 2  | 5 | 1 | 0 | 2            | 50     | 40     | 0      | 92                 | 20                | 4.60                    |
| 40      | Bulrush                    | 8  | 1 | 1 | 0 | 8            | 10     | 40     | 0      | 58                 | 20                | 2.90                    |
| 41      | Iris                       | 0  | 0 | 0 | 0 | 0            | 0      | 0      | 0      |                    |                   |                         |
| 42      | Swamp loosestrife          | 3  | 1 | 0 | 0 | 3            | 10     | 0      | 0      | 13                 | 20                | 0.65                    |
| 43      | Purple loosestrife         | 0  | 0 | 0 | 0 | 0            | 0      | 0      | 0      |                    |                   |                         |
| 44      | Phragmites                 | 0  | 0 | 0 | 0 | 0            | 0      | 0      | 0      |                    |                   |                         |
| 45      | Frogbit                    | 0  | 0 | 0 | 0 | 0            | 0      | 0      | 0      |                    |                   |                         |
| 46      | Slender spikerush          | 0  | 0 | 0 | 0 | 0            | 0      | 0      | 0      |                    |                   |                         |
| 47      | Smartweed                  | 0  | 0 | 0 | 0 | 0            | 0      | 0      | 0      |                    |                   |                         |
| 48      | Water marigold             | 0  | 0 | 0 | 0 | 0            | 0      | 0      | 0      |                    |                   |                         |
| 49      | American lotus             | 0  | 0 | 0 | 0 | 0            | 0      | 0      | 0      |                    |                   |                         |
| 50      |                            | 0  | 0 | 0 | 0 |              | 0      | 0      | 0      |                    |                   |                         |

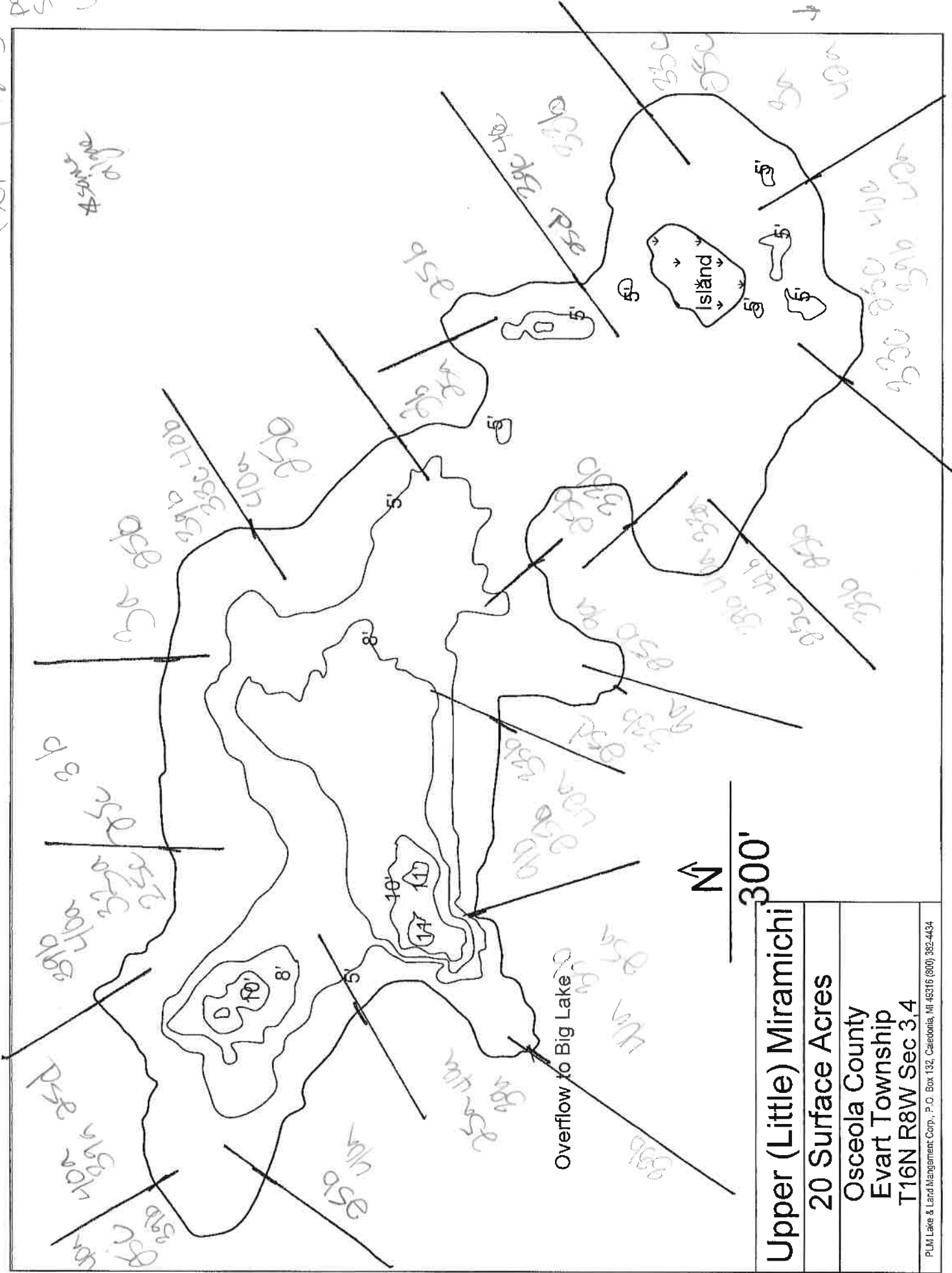
**Total cumulative cover**

**49.65**

10:20 AM  
part  
sun  
100

26 9-12-23

Upper  
Miramichi



Upper (Little) Miramichi  
 20 Surface Acres  
 Osceola County  
 Evert Township  
 T16N R8W Sec 3,4